



# CREATE NETWORKS

project business by LAPP



# Customer-oriented, success-oriented, family-oriented, innovative. **LAPP.**

From the very start, the company founders Oskar and Ursula Ida Lapp had a clear vision of the company's orientation. It has never just been about developing and producing innovative products. Family values have always been important too. Values that promote cooperation and enable relationships with employees, suppliers and customers based on partnership and trust. This sense of appreciation is firmly anchored in the business culture – and is a cornerstone of company policy.

As a completely family run company, we know: Everything that we have achieved since our founding in 1957 is based on the daily commitment of our skilled staff and partnerships with our customers based on trust. Each of them has made a decisive contribution to our mutual success.

Today, LAPP is one of the world's leading manufacturers of cables, leads, cable accessories and systems of the highest level of quality. We have approximately **3,770 employees worldwide**. With **17 production facilities on four continents**, more than **39 sales companies** and **hundreds of dedicated consulting experts**, we are always close by. And not just physically: customer proximity cannot be measured in mere kilometres. It is based on listening, making your challenges our own and developing solutions that help to further your business model.

Candid closeness and a trusting, partnership-based cooperation are more than just words for LAPP, they are values upon which we have built our family company. The result? Intelligent and reliable connectivity solutions precisely tailored to the needs of our globally active customers. For you as well.

# Conserve resources

The highest level of complexity – this is what distinguishes modern projects. Anyone looking to succeed with them must see the big picture as well as every last detail. They must consider the current tasks and perform these with great precision, in addition to coordinating their suppliers and the entire logistics. They must define the optimum connectivity solutions and provide specifications for custom-made products where necessary, to name but a few examples. At the same time, they must also implement the project within the specified schedule and budget. This must be achieved in the face of ever-increasing requirements concerning efficiency and effectiveness.

Your **LAPP** project team specialises in complex tasks of this nature.

## + Your team. Reliable.

A significant advantage for you is that you have a dedicated contact throughout the entire course of the project. This contact will be familiar with your project and your specific requirements, and will be personally available for all questions and services.

Perhaps you are looking to extend glass fibre networks or connect a wind turbine to the nearest transformer station. Maybe you want to install control cables or fit a tunnel with supply cables. Or perhaps your cables require high EMC protection or need to meet extreme requirements in terms of temperature resistance and flexibility – you can rely on the consultation skills and all-round service provided by your **LAPP** project team.

In doing so, you will be conserving resources as you will benefit from our service.



### The benefits for you:

- Products, consultation and implementation support from a single source
- Coordination of all partners involved
- Conservation of resources and budget
- An expert contact throughout your entire project

Working for you.

The **LAPP** project team.



# Products

## + Medium-voltage cables from 6/10(12)kV to 18/30(36)kV

### Copper

N2XSY	Cable for installation in the ground, in water, indoors and in cable ducts for power stations, industry and distribution networks. PVC outer sheath
N2XS2Y	Cable for installation in the ground, in water, indoors and in cable ducts for power stations, industry and distribution networks. PE outer sheath
N2XS(F)2Y	Cable for installation in the ground, in water, indoors and in cable ducts for power stations, industry and distribution networks. Longitudinally watertight
N2XS(FL)2Y	Cable for installation in the ground, in water, indoors and in cable ducts for power stations, industry and distribution networks. Longitudinally and transversely watertight

### Aluminium

NA2XSY	Cable for installation in the ground, in water, indoors and in cable ducts for power stations, industry and distribution networks. PVC outer sheath
NA2XS2Y	Cable for installation in the ground, in water, indoors and in cable ducts for power stations, industry and distribution networks. PE outer sheath
NA2XS2(F)2Y	Cable for installation in the ground, in water, indoors and in cable ducts for power stations, industry and distribution networks. Longitudinally watertight
NA2XS(FL)2Y	Cable for installation in the ground, in water, indoors and in cable ducts for power stations, industry and distribution networks. Longitudinally and transversely watertight

## + Low-voltage cables

### Copper

YYY	Cable for direct burial in building installations and fixed installations with various applications
NYCY	Cables for direct burial in fixed installations and building installations with a concentric, helical copper conductor
NYCWW	Cables for direct burial in fixed installations and building installations with a concentric, wave-like copper conductor
N2XY	Cables for direct burial in fixed installations and building installations with cross-linked core insulation
N2XH	Halogen-free power cable designed for fixed installation with cross-linked core insulation
NY2Y	Cable for direct burial in building installations and fixed installations with various applications
CU rope	Copper rope for earthing machines and systems

### Aluminium

NAYY	Cable for direct burial with aluminium conductors
NAYCWW	Cable for direct burial with aluminium conductors and a concentric, wave-like copper conductor
NAY2Y	Cable for direct burial with aluminium conductors and PE outer sheath
NA2X2Y	Cable for direct burial with aluminium conductors and cross-linked core insulation and PE outer sheath
NA2XY	Cable for direct burial with aluminium conductors and cross-linked outer sheath
NA2XH	Halogen-free cable for direct burial with aluminium conductors and cross-linked core insulation
NFA2X	Bundled aerial cable with cross-linked core insulation

## + GLASS FIBRE CABLES

A-D(ZN)2Y	Outdoor cable designed for pulling and blowing into pipe systems
A-DQ(ZN)2Y	Outdoor cable designed for pulling and blowing into pipe systems / aerial cable
A-DQ(ZN)B2Y	Outdoor cable with sheathing (partial rodent protection) suitable for direct burial / blowing / pulling
A-DQ(ZN)(SR)2Y	Outdoor cable with corrugated steel tape as rodent protection suitable for direct burial / blowing in
A-D(ZN)B2Y(SR)2Y	Outdoor cable with corrugated steel tape as rodent protection and PE inner and outer sheath

## + Rubber cables

H07RN-F	Rubber power and control cable, heavy-weight, for industrial and agricultural use
H07RN-F, enhanced version	Halogen-free power and control cable made of specialised rubber, long-term submersion up to 100m, ozone/oil-resistant
H07ZZ-F	Halogen-free power cable for machines and devices; designed for events and places with a high density of people and valuable assets
H01N2-D	Rubber power and control cable for arc welding, NSLFFÖU-based
NSGAFÖU	Flexible single core rubber cable for public transport and wiring
NSHXAFÖ	Halogen-free, flexible single core rubber cable for public transport and wiring
NSSHÖU	Mechanically robust rubber cable for underground and open-cast mining

## + SOLAR

H1Z2Z2-K	Cross-linked solar cables - H1Z2Z2-K construction, certified according to EN 50618
ÖLFLEX® SOLAR XLWP	Electron beam cross-linked solar cables with improved performance in water - EN 50618 construction

## + SERVO

ÖLFLEX® SERVO 2YSLCY	EMC-optimised motor cable, low-capacitance, double shielded
ÖLFLEX® SERVO 9YSLCY	EMC-optimised motor cable, low-capacitance, double shielded, certified



## + Data infrastructure cables

A-2Y(L)2Y	Outdoor telecommunication cable in accordance with VDE 0816 with special laminated sheath for use as a cable for direct burial or a duct cable
A-2YF(L)2Y	Outdoor telecommunication cable in accordance with VDE 0816, longitudinally and laterally watertight with petroleum jelly filling for use as a cable for direct burial or a duct cable
J-2Y(ST)Y	Installation cable in accordance with DIN VDE 0815 with PE core insulation
J-Y(ST)Y Fire alarm cable	Installation cable in accordance with DIN VDE 0815 with red outer sheath
J-H(ST)H Fire alarm cable	Halogen-free installation cable in accordance with DIN VDE 0815 with red outer sheath
JE-H(ST)H Fire alarm cable	Halogen-free installation cable in accordance with DIN VDE 0815 with red outer sheath
JE-LIYCY	Shielded data cable for industrial electronics
EB JE-LIYCY...BD	Shielded data cable for industrial electronics, blue for intrinsically safe circuits
JE-Y(ST)Y	Static shielded installation data cable for industrial electronics
RD-Y(ST)Y	Static shielded data cable for control technology
RE-2Y(ST)Yv	Computer cable with reinforced outer sheath
RE-2Y(ST)Yv PiMF	Computer cable with reinforced outer sheath and statically shielded core pairs
Coaxial cables RG	Coaxial cables according to RG standard
ETHERLINE® LAN cable	Cables and patch cable for industrial Ethernet

## + Functional endurance cables

NHXH E30	Halogen-free power cable with nominal voltage of 0.6/1 kV for fixed installation with functional endurance
NHXCH E30	
NHXH E90	
NHXH E90	

## + Single cores

LiY	Hook-up wire for telecommunication devices and electronic components
H05V-K	Harmonised, flexible PVC wiring single core for protected, fixed installation, 300/500V
H07V-K	Harmonised, flexible PVC wiring single core for protected, fixed installation, 450/750V
H07V-R	Harmonised, multi-stranded PVC wiring single core for protected, fixed installation, 450/750V
H07V-U	Harmonised, single-stranded PVC wiring single core for protected, fixed installation, 450/750V
H05Z-K 90°C	Harmonised; halogen-free to protect human life, the environment and material assets, 300/500V
H07Z-K 90°C	Harmonised; halogen-free to protect human life, the environment and material assets, 450/750V
Multi-standard SC 1	UL-recognised (AWM) + CSA AWM I A/B + <HAR> H05V-K, tinned-copper wires
Multi-standard SC 2.1	USA: UL-listed (MTW), Canada: CSA (TEW), Europe: <HAR> H07V-K (depending on cross s.), tin-plated strands
Multi-standard SC 2.2	UL-listed (MTW), CSA (TEW), <HAR> H07V2-K: max. +90°C, UL (AWM): Umax = 1 kV, tin-plated copper wires
ÖLFLEX® STATIC CY	Closely shielded, doubly insulated PVC single core for fixed installation

LAPP sells more than 40,000 articles and is very quick to find the right cables, connectors and whatever else you need. Simply use our product finder in our e-shop!



# Your expert partner for all projects

Are you faced with challenges in terms of time and space on projects and construction sites?

Our specialised logistics will help you to always have the right product at the right time in the right place. Our customised solutions, tailored to your requirements, offer you various options to optimise your processes. As a reliable partner, we will support you with a strong network.



## The benefits to you:

- The right goods at the right time in the right place
- Process optimisation at the delivery location thanks to specialised equipment
- Advice and planning for delivery

A conceptual image showing a globe with a complex network of white dots and lines, representing a global network or data flow. Two hands are visible at the bottom, holding the globe.

The **LAPP** project team.

## On-site hub

The on-site hub is a robust and customised storage container enabling optimal storage for all ordered cable accessories. This means that even small parts can also be found quickly without any risk of loss. The integrated shelf and container system gives you an overview of all the available materials and creates a base for efficient materials management.



### The benefits to you:

- Saves time, allowing you to focus on your core business
- Permanent availability of goods (kanban)
- Reduces warehouse stock
- Cost benefits due to overall optimisation of the delivery process
- Materials are also protected against both the weather and theft
- Optional equipment allows additional use of the Container

## Multi-chamber drum

The multi-chamber drum enables stranding to be carried out directly on your construction site. Typically, a material with the same length (example, 3 x 500 m) is wound on to a drum.



### The benefits to you:

- Transport cost reduction
- Simultaneous installation of several cables at the installation site
- Simplified processes on-site
- Complex stranding of several cables is not necessary
- Option of returning the drum

## Drum packaging

Would you still like to have the option of unwinding from the shelf even though you don't have a drum shelf? Do you need a flexible construction for unwinding? Then we have the just the thing for you. Our simple packaging construction makes it possible to directly unwind drums with a flange diameter of 40 cm.



### The benefits to you:

- Simple unreeling directly from the box
- Can be stacked at the location
- Dispenser solution (reusable)
- Manual transport possible thanks to carrier handles
- Easy disposal
- Product protection



# Cable drum pallet

With our cable drum pallet, drums with a flange diameter of up to 90 cm can be transported and unwound.



## The benefits to you:

- 4-way entry
- Drum can be unwound directly from the load carrier
- No need to move the drum thus reducing any risk of damage
- Re-usable
- Suitable for export as IPPC treated

# Plastic drums

Do you require plastic drums for use in clean rooms due to applicable HACCP regulations? We can process your orders on polypropylene drums on request.



## The benefits to you:

- Use in hygiene-critical areas
- Customer does not need to rewind on to a plastic drum
- Light net weight
- Enhanced stability
- Recyclable
- Suitable for export
- Sizes are similar to LAPP standard plywood drums

# Transport frames

We will provide you with transport frames, free of charge, for large drums with a flange diameter greater than 160 cm.



## The benefits to you:

- 4-way entry
- Secure stand even on poor terrain (construction site)
- Suitable for export as IPPC treated
- Re-usable



# Disposal

U.I. Lapp GmbH can provide you with a nationwide, disposal and recycling service for our packaging, free of charge, in cooperation with Interseroh Dienstleistungs GmbH.

From an environmental aspect, it makes sense to find an ideal balance between amounts to be collected and the frequency of the collections. We are sure that we will also be able to agree on the quantity or the appropriate frequency of collections with your company, so we can provide you with this service.



## The benefits to you:

- Time-saving disposal, allowing you to focus on your core business
- Simple means of contact via fax, e-mail, app
- Free collection of wooden drums from a total weight of approx. 300 kg or 30 items
- Correct disposal/sustainable and resource-saving handling

## Do you need customised solutions?

No problem! At the LAPP Group, we have a motivated team of qualified employees on hand with help and advice about solving your logistical challenges.

### + Contact:

Call our friendly and knowledgeable sales team at our headquarters in Stuttgart quickly and easily on:

**+49 (0) 711 7838-01**

# Ensure success – in every application area

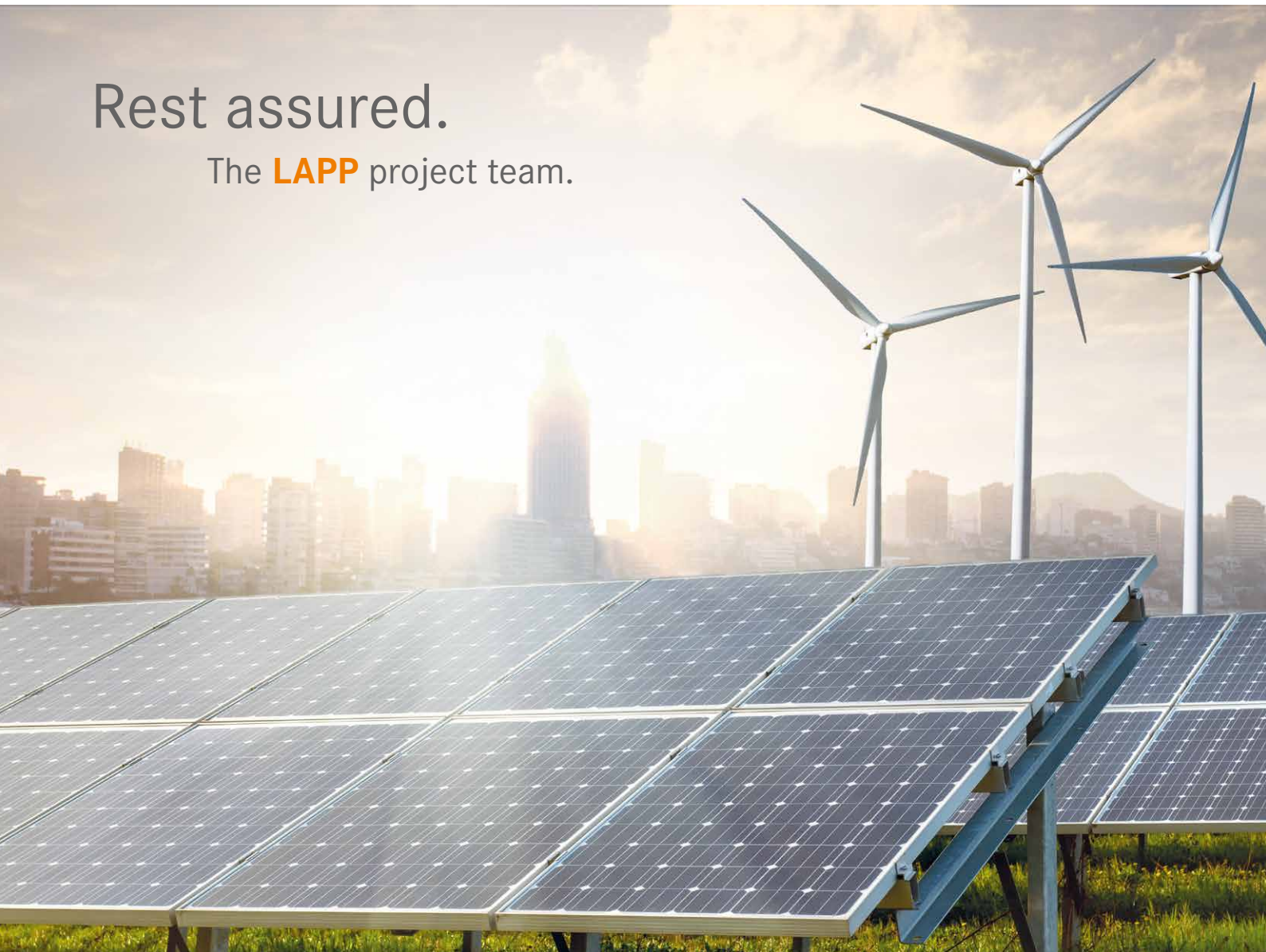
Infrastructure cables are the lifeblood of our society. They are used to create high-performance connections – the basis for innovation and competitiveness, both today and in the future. This applies to manufacturing companies including machinery and plant construction firms or the steel industry, and to service providers such as construction firms, civil engineers and energy suppliers. Last but not least, it also applies to large-scale projects such as airports, railway stations and tunnel construction, and to telecommunications providers and municipal providers.

+ Your expert team. Target-oriented.

Quick and flexible, efficient and target-oriented – you can ensure your success with the expertise of your **LAPP** project team.

## Rest assured.

The **LAPP** project team.





# Industries

We have a wealth of experience in all industries in which cables are used.



+ Factory automation



+ Process automation



+ Mining



+ Public utility companies



+ Building automation



+ Municipal works





+ Structural and civil engineering



+ Infrastructure



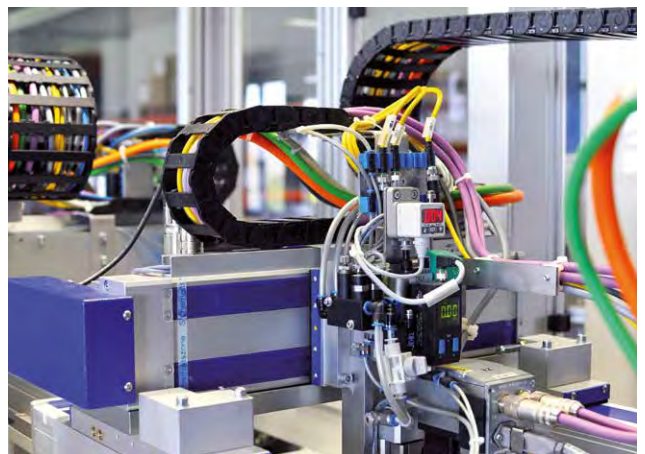
+ Transport



+ Renewable energy



+ Tunnel construction



+ Industrial automation



# There for you, no matter where you are

We implement your wishes and requirements. We work with you to create a precise schedule and to clarify delivery times and all product details – from the correct sheathing to flexibility and temperature resistance, through to the quantity, size and weight of the cable drums required. If you wish to feed or blow connecting cables into an existing pipe system, we will provide you with the right products for this purpose. On request, we can also print or label your cables with your logo, your data and much more besides.



## LAPP logistics sets standards in many ways. Here are the key facts and figures:

- 300 logistics employees
- 90,000 drums in Ludwigsburg
- 15,000 drums in Hanover
- More than 40,000 articles
- Approx. 750,000 transport orders per annum
- Approx. 4,350 lorry shipments per annum\*

(\*Value calculated based on the annual shipment volume of 40 t lorries)





Follow LAPP on:



**Terms of Trade:**

Our general conditions of sale  
can be downloaded from our website  
[www.lappgroup.com/terms](http://www.lappgroup.com/terms)



[www.lappgroup.com](http://www.lappgroup.com)

To contact your local LAPP representative,  
please visit [www.lappgroup.com/worldwide](http://www.lappgroup.com/worldwide)